

MPRINT T58 WiFi Printer

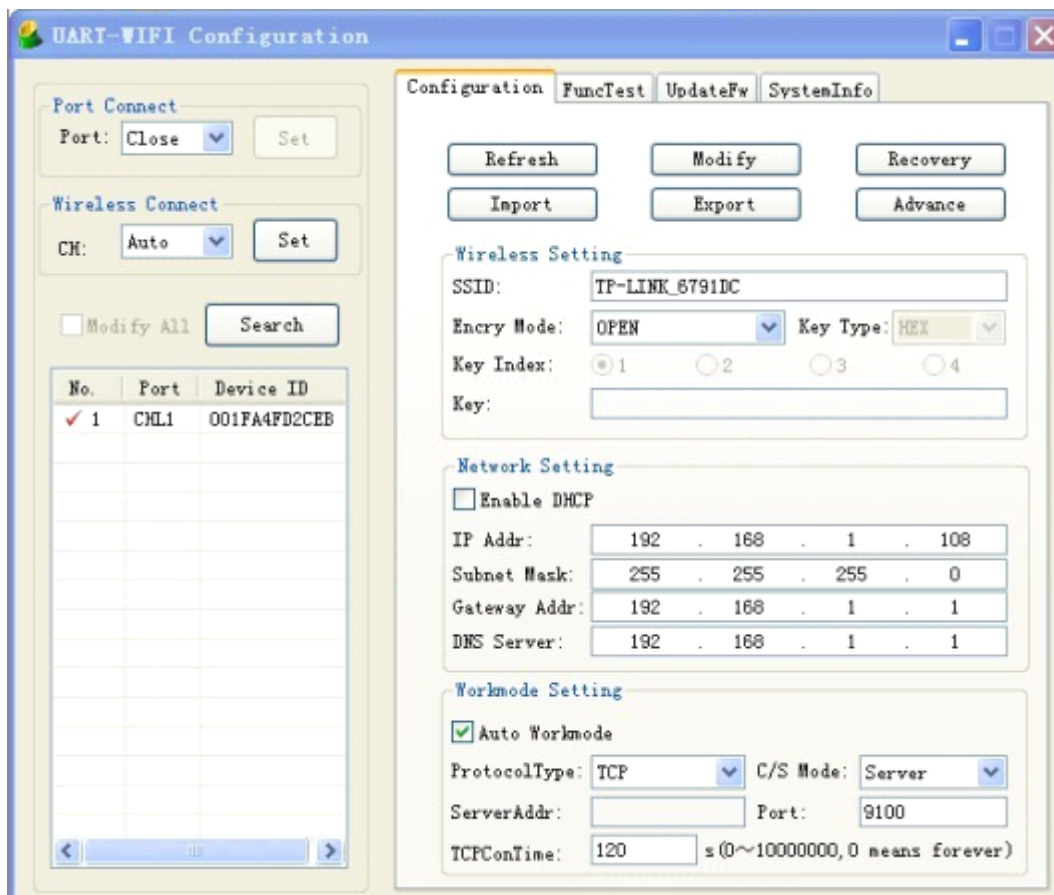
Operation Guide

MPRINT T58-WiFi

MPRINT T58 WiFi printer can connect the common wireless local area network, low cost;

First, need to install WiFi printer configurator driver

Second, operate control tool "UART-WIFI.exe", The printer network configuration (use WiFi printer configurator) table as follows:



1. Turn the printer power on;
2. "Port Connect"--"Port" set "Close";
"Wireless Connect"--"CH" set "Auto";

3. Click "Search", Below is the WiFi printer. If you can not search, please try again;
4. Select one of them, and configurate at the right side of "Configuration";
5. "Wireless Setting"
Fill in the connection network name and related encryption measure;
6. "Network Setting"
Set the printer IP address, Subnet Mask etc; We don't recommend that you use DHCP service to control printer;
7. "Workmode Setting"
"Protocol Type" select "TCP", "C/S mode" select "Server", "Server Address " is empty, "Port" set by actual, usually set to 9100 etc., But when one computer works with several printers, we recommend difference. "TCP Contime" select default;
- 8.** After finishing parameter change, Click "Submit". Then select "Search" repeat, Double-click target printer in the list to check that the parameter can meet the requirments or not;
- 9.** Finsh all above steps and turn the power off, then reset the printer, **This step please do not search for printer by configuration tool, use Ping command in the command prompt box to check printer condition;**

10. Ping is ok, According to actual condition to select configuration driver or print directly by IP address.